

# NEVADA LONG TERM CARE FACILITIES OUTREACH

---

Katherine Strain, Long Term Care Outreach Coordinator / CC3 Project Manager  
Nevada State Immunization Program

August 10, 2023



NEVADA DIVISION of PUBLIC  
and BEHAVIORAL HEALTH

ALL IN GOOD HEALTH.

# ABOUT DPBH

---



## MISSION

To protect, promote, and improve the physical and behavioral health and safety of all people in Nevada, equitably and regardless of circumstances, so they can live their safest, longest, healthiest, and happiest life.

## VISION

A Nevada where preventable health and safety issues no longer impact the opportunity for all people to live in the best possible health.

## PURPOSE

To make everyone's life healthier, happier, longer, and safer.



**ALL** IN GOOD HEALTH.

---

# AGENDA

1. Nevada State Immunization Program Long Term Care Outreach
2. Long Term Care 1.0 – 3.0 Timeline
3. LTC 3.0 Partners
4. LTC 3.0 Outreach Information Flow Diagram
5. LTC 3.0 Partner Outreach
6. Nevada Skilled Nursing Facility Data
7. Future Outreach Plans
8. Questions for Commission on Aging Subcommittee
9. Contact Information
10. Acronyms



# LONG TERM CARE OUTREACH NEVADA STATE IMMUNIZATION PROGRAM (NSIP)

## **LTC 1.0: Pharmacy Partnership Program (PPP) for Long Term Care (LTC)**

Dec 2020 – Mar 2021 CVS and Walgreens pharmacy outreach to Skilled Nursing Facilities (SNFs) and some Assisted Living Facilities (ALFs)

## **LTC 1.5: Ongoing Vaccination Plans for Long Term Care Facilities (LTCF)**

Apr 2021 – Aug 2021 NSIP targeted outreach to SNF survey requests

## **LTC 2.0: Access to COVID-19 Initial, Additional and Booster Doses**

Aug 2021 – Apr 2022 Albertsons & Safeway pharmacies and Local Health Authorities (LHAs)

## **LTC 3.0: NV LTC All Vaccine Access Program**

Apr 2022 – Present Albertsons & Safeway pharmacies and LHAs



# NSIP LTC 3.0 PARTNERS

Pharmacy Partners

Local Health Authorities  
(LHAs)

Counties

Providers

Healthcare Quality and  
Compliance (HCQC)

Office of Public Health  
Investigations and  
Epidemiology (OPHIE)

Nevada Department of  
Corrections (NDOC)

Nevada Ombudsman

Maximus Call Center

NV Department of  
Health and Human  
Services Aging and  
Disability Services  
Division

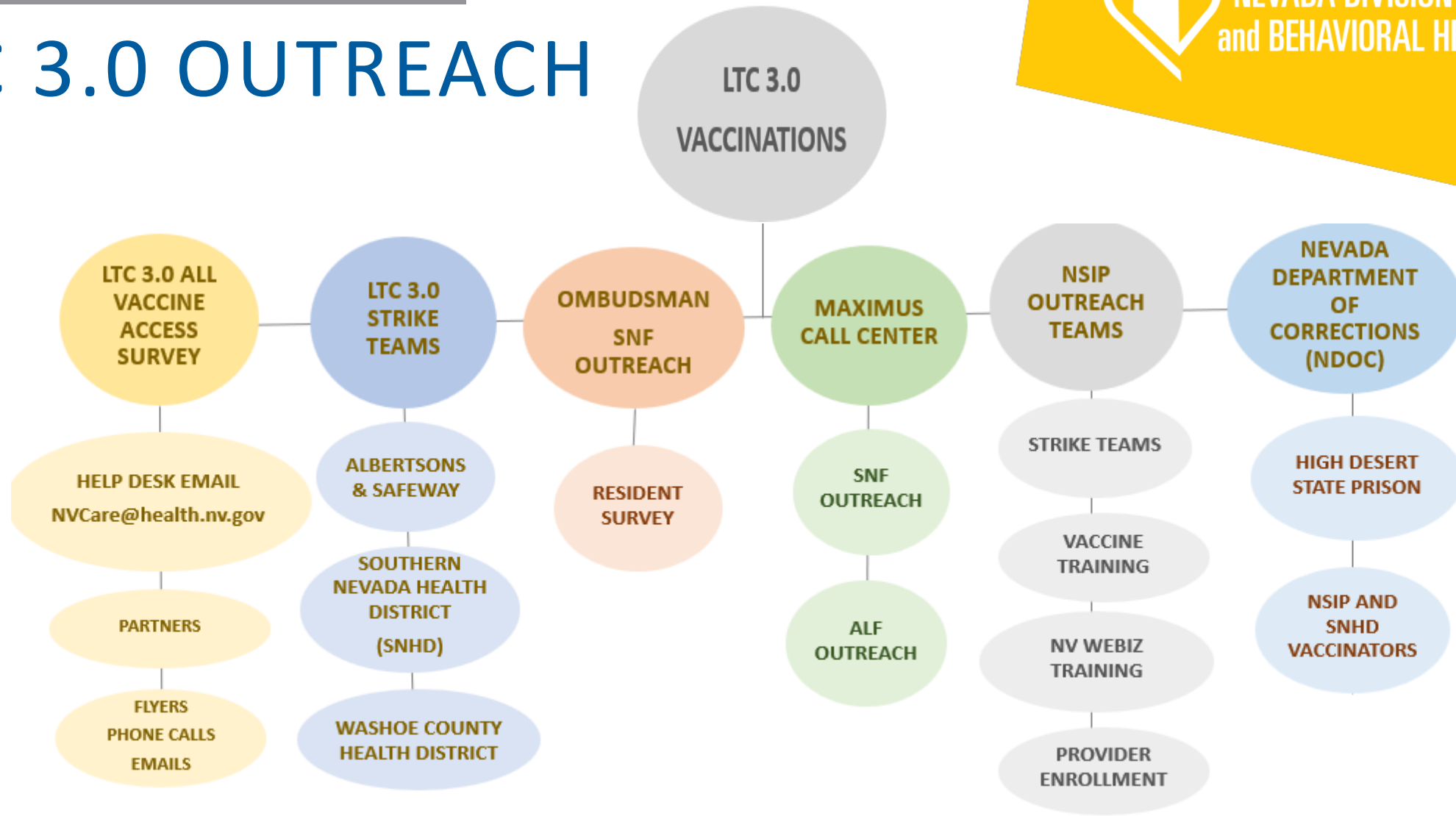
Community Based  
Organizations

Comagine Health

# LTC 3.0 OUTREACH



NEVADA DIVISION of PUBLIC  
and BEHAVIORAL HEALTH







# LTC 3.0 ALL VACCINE ACCESS PROGRAM FLYERS



## Hello, Nevada Care Facilities: The Nevada State Immunization Program's Pharmacy Partnership is Expanding

Nevada State Immunization Program (NSIP) has expanded their COVID-19 Pharmacy Partnership Program to now provide residents and staff at Long-Term Care Facilities access to not only COVID-19 vaccines, but routine vaccines as well. With the new Long-Term Care All Vaccine Access Program (LTC 3.0), care facilities are able to partner with a pharmacy to request routine vaccines, such as those protecting against Hepatitis A and B, Influenza, Pneumococcal, Shingles and Tdap. Increased cases of Influenza and COVID-19 make it essential for staff and residents of LTCFs to be up-to-date on their vaccines, to protect our most vulnerable populations. We can help!

<p>Adult Combined Vaccination Schedule 2023</p>  <p>Use your smartphone's camera to follow the links in the QR codes below for the recommended vaccine schedules for adults and children.</p> <p>Or click <a href="#">here</a></p>	<p>Child Combined Vaccination 0-18 Years 2023</p>  <p>Or click <a href="#">here</a></p>
---	--

If you are interested in the expanded LTC 3.0 program, please fill out this new survey, even if you have already filled out the prior COVID-19 LTC 2.0 survey. Please complete a separate survey for each facility location. By completing this new survey, you provide NSIP with your contact and facility information so that a partner pharmacy or local health district can contact you and discuss your vaccination needs. Your facility information will only be given to your pharmacy partner or to provide you with updates on the pharmacy partnership program. There is a dropdown menu to choose vaccines you are interested in having administered at your facility to residents, staff and even family members.

Your facility will be contacted by NSIP pharmacy partners or your local health district via the phone or email contact information you provide on the survey. If you have any questions or comments about the new LTC 3.0 program, please email NSIP at [NVCare@health.nv.gov](mailto:NVCare@health.nv.gov)

Through the new LTC 3.0 program, NSIP and their partners are working to ensure all Nevadans have equal access to recommended vaccines.

Scan Here to Complete  
Nevada's Long Term Care  
All Vaccines Access  
Program Survey





Or click [here](#)



rev 06/23

## Hola, centros de atención de Nevada: La Asociación de Farmacias del Programa de Vacunación del Estado de Nevada se ha expandido

El programa de vacunación del estado de Nevada (NSIP por sus siglas en inglés) ha expandido su Programa de Asociación de Farmacias para ahora proveer a sus residentes y al personal de los centros de atención de Nevada acceso no solamente a vacunas de COVID-19, sino también a las vacunas de rutina. Con el nuevo programa de acceso a todas las vacunas para los centros de atención a largo plazo (LTC 3.0), estos pueden asociarse con una farmacia para solicitar vacunas de rutina, como las que protegen contra la hepatitis A y B, influenza, neumococo, varicela y Tdap. El aumento de casos de influenza y COVID-19 hace que sea esencial que el personal y los residentes de estas instalaciones de cuidados a largo plazo estén al día con sus vacunas para protegernos a nosotros mismos, a nuestras familias y a nuestras poblaciones más vulnerables. ¿Podemos ayudar!!

<p>Calendario de Vacunación Combinada 2023 de Adultos</p>  <p>Use la cámara de su teléfono inteligente para seguir los enlaces en los códigos QR a continuación para ver los calendarios de vacunación recomendados para adultos y niños.</p> <p>O haga clic <a href="#">aquí</a></p>	<p>Calendario de vacunación combinada 2023 de niños de 0-18 años</p>  <p>O haga clic <a href="#">aquí</a></p>
--	--

Al completar esta breve encuesta, le proporciona a NSIP su información de contacto y del centro para que una farmacia asociada o el distrito de salud local puedan comunicarse con usted y analizar sus necesidades de vacunación. La información de su centro solo se le dará a su socio farmacéutico o para brindarle actualizaciones sobre el programa de socios farmacéuticos. Hay un menú desplegable para elegir las vacunas que le interesa que se administren en sus instalaciones a los residentes, al personal e incluso a los miembros de la familia. Si está interesado en el programa extendido de LTC 3.0, favor de completar esta encuesta, incluso si lo ha hecho en ocasiones anteriores. Por favor complete una encuesta por separado para cada centro o locación.

Su centro de atención de largo plazo será contactado por los socios farmacéuticos de NSIP o por su distrito de salud local por medio de un correo electrónico o llamada telefónica, basados en la información proporcionada en la encuesta.

Si tiene alguna pregunta o comentario sobre el Programa de Acceso a Todas las Vacunas LTC 3.0, envíe un correo electrónico a NSIP a [NVCare@health.nv.gov](mailto:NVCare@health.nv.gov)

Escanee aquí para completar  
la Encuesta del Program  
de Acceso a Todas las  
Vacunas de Atención a Largo  
Plazo de Nevada



O haga clic [aquí](#)



rev 06/23

# LTC 3.0 BIVALENT BOOSTER AND MEDICATION FLYERS



**Long Term Care Facilities**

**Why Do I Need a Bivalent Booster?**

Nevada Department of Health and Human Services would like to offer you some important information and talking points to increase confidence in bivalent boosters that reduce the risk of serious illness and death.

**What is a bivalent booster?**  
The bivalent booster is an updated vaccine that helps target the new variants of COVID-19, like Omicron, and boosts your immune system to better fight symptoms from COVID-19 disease.

**Why should I get boosted if I might get COVID-19 anyway?**  
Even if you test positive for COVID-19, having the bivalent booster works to lower your risk of developing symptoms and especially lowers your risk of developing severe symptoms or being sent to the hospital. People who get the bivalent booster can still get infected with the virus, but they are much less likely to get seriously ill, need to be hospitalized, or die.

**Why should I get a bivalent booster shot if I already got a booster?**  
Similar to the yearly flu vaccine, the COVID-19 virus keeps changing slightly and over time a person's immune system can lose its memory of prior infections. The bivalent booster is tailored to two of the most recent Omicron variants that are circulating now and boosts your immune system, so if you get infected, it can fight the COVID-19 virus more efficiently.

**GET BOOSTED TO PROTECT YOURSELF, YOUR RESIDENTS, YOUR CO-WORKERS AND YOUR LOVED ONES**

**Long Term Care Facilities**

**Why Do I Need to Take Medication?**

Nevada Department of Health and Human Services would like to offer you some important information and talking points to dispel misinformation about COVID-19 medications that reduce the risk of serious illness and death.

**MYTH: I don't need medication for a mild-to-moderate illness.**  
Answer: Lots of us are used to waiting out similar cold and flu symptoms to see if they get "bad enough" to need medication. COVID-19 is different. It is important to get treated early! Many of us are still at risk of developing our mild or moderate symptoms into something more serious. Medications can keep you out of the hospital and prevent you from dying, and they may even reduce your chance of developing Long COVID. Paxlovid medication is given twice daily for five days, starting as soon as possible and within five days of symptoms starting.  
-Among non-hospitalized, unvaccinated persons at high risk of progression to severe disease, taking Paxlovid reduced the risk of hospitalization or death by 88%.

**MYTH: I'm not high risk.**  
Answer: Most of us don't think of ourselves as "high risk." However, many factors that can make even very healthy people more susceptible to becoming very ill from COVID-19. The truth is that most adults fit into one of these categories  
They include:  
-Anyone over age of 50.  
-People living with diabetes, mental conditions (anxiety, depression, ADHD, and more), chronic lung disease (including asthma), chronic kidney disease, and cardiovascular disease.  
-People who are overweight, physically inactive, or who smoke.  
-People who are negatively affected by social determinants of health, such as race, ethnicity, socio-economic status, or limited access to healthcare.  
-People who are unvaccinated or not up-to-date with vaccinations.

**MYTH: Medications have serious side effects.**  
Answer: Most people have little-to-no side effects. Paxlovid side effects occurred in less than 10% of patients, with the most common side effects being an unpleasant taste in the mouth (6%), diarrhea (3%), hypertension (1%), and/or muscle aches (1%). Some other medications may need to be adjusted while you are taking Paxlovid. If you cannot take Paxlovid for any reason, you may be offered Molnupiravir instead, which has very few side effects, but you cannot take it if you are pregnant.

**MYTH: Rebound caused by medications is common and can be dangerous.**  
Answer: Rebound has been in the news a lot. Most people don't realize is that viral rebound happens both in people who don't take medications and those who do, and less than 1 in 5 people experience rebound. The good news is that if your symptoms do return, they tend to be mild and do not require repeating the medication.

**GET TREATMENT EARLY TO REDUCE YOUR RISK OF HOSPITALIZATIONS AND DEATH!**

**AN UPDATED COVID-19 VACCINE HELPS SAVE LIVES**

Vaccinated people\* who received an updated COVID-19 vaccine were

**14X less likely to die**  
compared with those who received no vaccine

**3X less likely to die**  
compared with those who received only the original COVID-19 vaccine(s)

\* Completed the original COVID-19 vaccine primary series with or without original booster(s)

[bit.ly/mm7206a3](https://bit.ly/mm7206a3) February 10, 2023



REV. 06/23



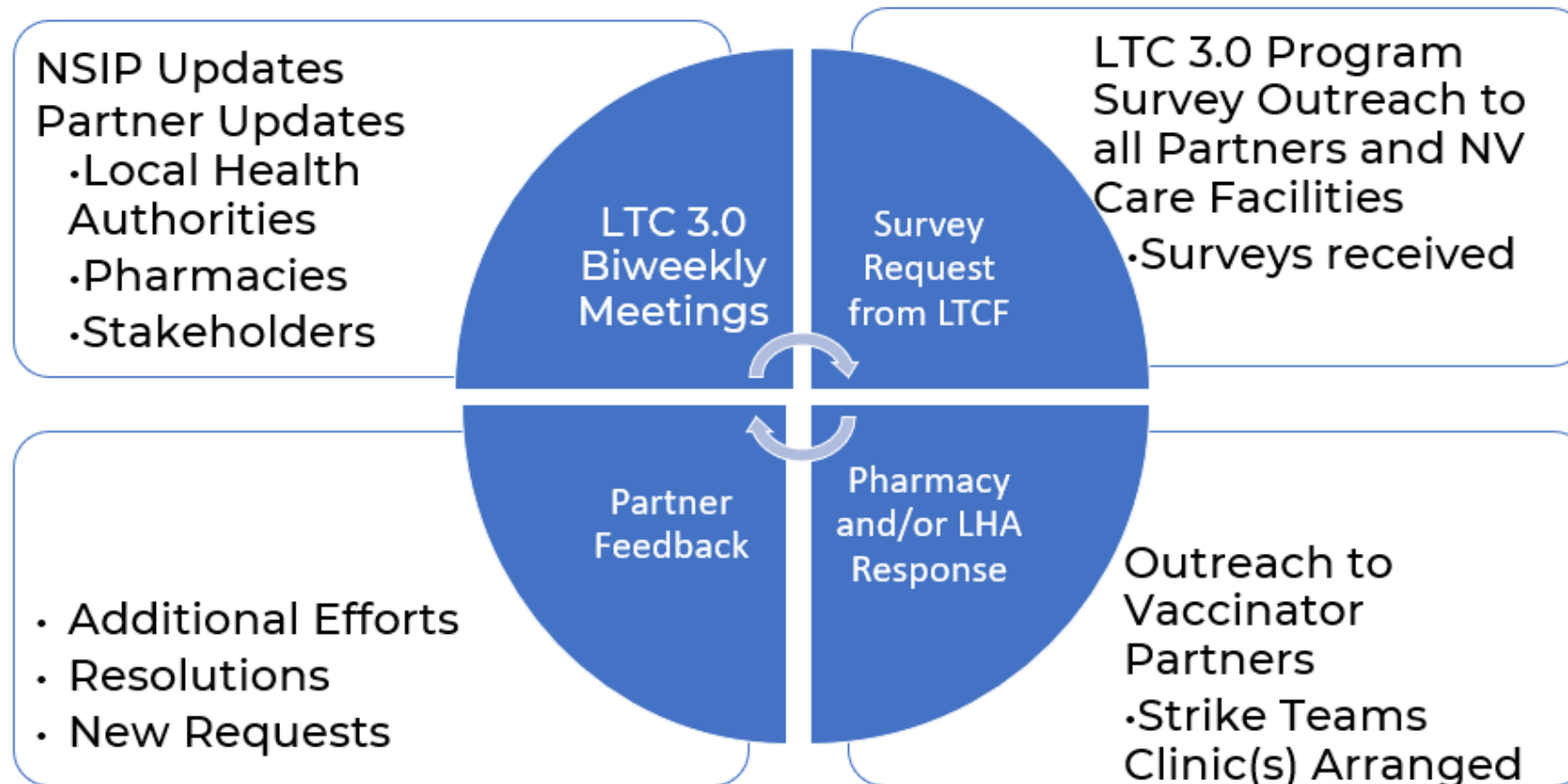
Source: January 2023, California Department of Health

REV. 06/23





# LTC 3.0 All VACCINE ACCESS PROGRAM INFORMATION FLOW



# SOUTHERN NEVADA HEALTH DISTRICT (SNHD)



**People with qualifying disabilities can get a COVID-19 shot in their own comfortable space.**



The Southern Nevada Health District is offering COVID-19 vaccination services to people who require assistance in their own homes.

Call or email to request services.  
**702-759-INFO (4636)**  
[homebound@snhd.org](mailto:homebound@snhd.org)



## Long Term Care Facilities Strike Team

- Partnership with Albertsons requests
- LTCF request vaccines through a central online link for collaborative effort
- Large Skilled Nursing Facilities- Albertsons
- Residential LTCFs-SNHD
- Co-administration of other vaccines (exp. High Dose Flu, PCV, Shingles)
- As of 05/1/2023, this program was expanded to provide vaccine at long term care facilities and adult day cares

## Homebound

- COVID-19 Vaccination services for clients with disabilities, mobility issues, or immunocompromised conditions
- Trained Special Needs Strike Team available
- SNHD COVID Call Center mobilized after demobilization of State Call Center- New contact is (702) 759-INFO or [homebound@snhd.org](mailto:homebound@snhd.org)

## Long Term Care Facilities

- HCP Team supports and trains long term care facilities to carry and administer vaccine on-site to patients
- As of 05/01/2023, this program was expanded to the LTCF Team to provide a more robust training and resource program through acting as a direct liaison and educator for LTCFs

# SOUTHERN NEVADA HEALTH DISTRICT (SNHD)



**GET IT. GIVE IT.**  
**FOR OUR HEALTH CARE LEADERS!**  
Take the lead and administer COVID-19 vaccines

**DID YOU KNOW?**

- COVID-19 vaccines are now on the CDC's childhood, adolescent, and adult immunization schedules.
- If you carry flu or other vaccines at your clinic, hospital or long-term care facility, you can carry COVID-19 vaccines.
- A team from the Southern Nevada Health District can provide you with the training and other support needed for you to carry COVID-19 vaccines.
- There are now pre-filled single-dose syringes available for some COVID-19 vaccines.

**WHAT ARE THE REASONS TO CARRY COVID-19 VACCINES:**

- Creates an opportunity for you as the most trusted source of COVID-19 information to get your patient vaccinated.
- Convenient for your patient - they can get vaccinated during their appointment or prior to discharge and they don't need to go elsewhere for it.
- Costs for administering the vaccine are billable.

**WHAT'S THE CATCH?**

There is no catch! Our goal is to help health care providers vaccinate their patients at their clinic, hospital, or long-term care facility. The SNHD Health Care Provider Team will provide one-on-one training to you and/or your staff in the following areas:

- Enrolling in the COVID-19 vaccine program.
- Ordering vaccine.
- Storing and handling vaccine.
- Inventory and reconciliation of vaccine.
- Data entry.

**TO GET STARTED CONTACT:**

Markia Jefferson,  
Program Coordinator  
(725) 277-1677  
Jeffersonm@snhd.org

Michelle Wong,  
Community Health SN  
(725) 272-8563  
wongm@snhd.org

## Get It. Give It. Initiative

This HCP Team supports, enrolls, and provides training for HCP offices to carry, recommend, and administer COVID-19 vaccine on-site. Training includes storage and handling, inventory and reconciliation of vaccine, data entry for HCP offices, hospitals, and long-term care facilities

- As of 3/20/2023, 239 active providers are enrolled, only 46 carry COVID-19 vaccine
- As of 07/24/2023, 238 active providers were enrolled, there are 24 carry COVID-19 vaccine
- A known vaccine barrier for adults is inconvenience
- Healthcare provider recommendation is one of the top reasons why a patient will get vaccinated
- Pharmacies were identified to provide the most COVID vaccine to the general population ages 12 and older, however a significant gap was identified specifically for the accessibility of COVID vaccine among children ages 6 months old to 4 years old among healthcare providers and pharmacies

This identified the need for focused interventions to encourage pediatricians to carry and recommend COVID vaccine in their office.

# SOUTHERN NEVADA HEALTH DISTRICT (SNHD)



The infographic features a top border with icons of hands, a house, a vaccine vial, a face mask, and a hand sanitizer bottle. A central graphic shows two hands holding a vaccine vial with the text 'ARM IN ARM' and 'ARMINNEVADAS.COM'. Below this is a circular photo of four diverse people smiling. The text 'COVID-19 Outreach Branch' and 'WHAT WE DO.' is prominently displayed. The infographic lists five service categories: Healthcare Provider Initiative, Long Term Care Facilities, Childcare Centers, In-Home Covid-19 Services, and Pop-Up Clinics. It also includes a QR code and the website 'covid.southernnevadahealthdistrict.org' for more information and appointments. The SNHD logo is at the bottom right.

**COVID-19 Outreach Branch**

## WHAT WE DO.

**Healthcare Provider Initiative:**  
Offers support to healthcare providers to carry, store and administer vaccine on site independently in order to increase protection against Covid-19.

**Long Term Care Facilities:**  
Assist providers to carry and administer vaccine to patients, while providing education to staff.

**Childcare Centers:**  
Administer Covid-19 vaccines to children, parents, and staff.

**In-Home Covid-19 Services:**  
Vaccinate adults and children with qualifying disabilities for Covid-19 in their own homes.

**Pop-Up Clinics:**  
Provide vaccine clinics and educational sessions at community outreach events throughout the Las Vegas valley.

**Static Sites:**  
Provides regularly scheduled vaccine clinics in local neighborhoods.

To learn more about these programs or to schedule an appointment visit:  
[covid.southernnevadahealthdistrict.org](https://covid.southernnevadahealthdistrict.org/)

**SNHD**  
Southern Nevada Health District

## What We Do

### 2 Static Vaccine Clinics: Boulevard Mall and Fremont Clinic

- Strategically located in priority areas to increase access for underserved populations
- Open Mon-Sun with afterwork hours

### Pop-up Sites

- Vulnerable populations
- Anyone can request a clinic online at:  
<https://covid.southernnevadahealthdistrict.org/>

### Homeless

- Community Partners: NHA, SNHD IZ Outreach, Touro, churches

### NDOC- High Desert Prison

159 COVID-19, 57 Flu

# ALBERTSONS PHARMACY PARTNERS SOUTHERN NV

Albertsons and Vons have partnered with the NSIP and SNHD to increase access to vaccines by providing onsite vaccine clinics to priority populations in long term care facilities in Southern Nevada.





# ALBERTSONS PHARMACY PARTNERS SOUTHERN NV

## Successes For LTCF 3.0



### Vaccines Administered At LTCF 3.0 Sites Since May 2022

- **Number of Total Onsite Vaccine Clinics:** 56
- **Vaccines Administered**
  - **COVID:** 1171
  - **Flu:** 501
  - **Pneumonia:** 163
  - **Shingles:** 109
  - **Other:** 72
  - **Total:** 2016

### Other Services Offered To Senior Living Facilities

- **Delivery of At-Home COVID-19 Test kits**
  - Allowing for increased access to COVID-19 testing



\*Other includes: Hep B, MMR, Chicken Pox, Polio, Tetanus, Meningococcal, HPV, and Hib

# ALBERTSONS PHARMACY PARTNERS SOUTHERN NV

## Committed To Making Vaccines Accessible To Everyone

Albertsons is committed to community outreach and making vaccines accessible to everyone. In addition to partnering with NSIP and SNHD, Albertsons has partnered with the NV Board of Pharmacy and organizations such as Immunize NV to provide vaccines to underserved communities as well as the highest risk communities including seniors here in Las Vegas

- **2022 Successes**

- **Number of on-site clinics:** 462
- **Total number of vaccines administered at on-site clinics:** Over 13,000





# WASHOE COUNTY HEALTH DISTRICT (WCHD)

WASHOE COUNTY  
HEALTH DISTRICT  
ENHANCING QUALITY OF LIFE

Get a vaccine without leaving your home!

## Homebound Vaccination Program

If you are **homebound, bedridden or have difficulty leaving your house**, the Washoe County Health District can come to your residence.

We offer:

- COVID-19 vaccine
- Influenza (flu) vaccine
- COVID-19 testing

Vaccinations and testing are available for all those who live in the home as well.

To Schedule Call  
**775-525-4601**

Or email: [homebound@washoecounty.gov](mailto:homebound@washoecounty.gov)

## Homebound

- March 2020 – Implemented the Homebound Team to provide COVID-19 testing to residents with limited mobility or transportation needs
- January 2021 - Expanded to include COVID-19 vaccinations (and Influenza vaccine)
- The Homebound Team covers the 6,000 square miles of Washoe County
- Many facilities have established recurring visits to ensure the residents have received the proper vaccinations for appropriate continuity of care.



# WASHOE COUNTY HEALTH DISTRICT (WCHD)

WASHOE COUNTY  
HEALTH DISTRICT  
ENHANCING QUALITY OF LIFE

Get a vaccine without leaving your home!

## Homebound Vaccination Program

If you are **homebound, bedridden or have difficulty leaving your house**, the Washoe County Health District can come to your residence.

We offer:

- COVID-19 vaccine
- Influenza (flu) vaccine
- COVID-19 testing

Vaccinations and testing are available for all those who live in the home as well.

To Schedule Call  
**775-525-4601**

Or email: [homebound@washoecounty.gov](mailto:homebound@washoecounty.gov)

## Homebound

- Focused on residents who are at a high priority for COVID-19 and Influenza vaccinations, such as:
  - Homebound and their Caregivers
  - Behavioral Health
  - Homeless Centers
  - Memory Care Facilities
  - Rehabilitation Facilities
  - Remote Locations
  - Senior Centers
  - Senior Group Homes
  - Shelters
  - Skilled Nursing Facilities
  - Transitional Housing
  - Veterans Housing
- **2,804** sites visited
- **1,183** unique locations
- **7,079** COVID vaccines





# SAFEWAY PHARMACY PARTNERS NORTHERN NV

Safeway, Albertsons, and Vons have partnered with the NSIP and WCHD to increase access to vaccines by providing onsite vaccine clinics to priority populations in long term care facilities in Northern Nevada.





# SAFEWAY PHARMACY PARTNERS NORTHERN NV

---



- Safeway of Northern Nevada values their partnership with NSIP and the Nevada Board of Pharmacy and are proud to be a part of the effort to protect the community!
- Many of the long-term care facilities served are smaller facilities that have difficulty getting support
- LTC 3.0 allows the Safeway pharmacy partner to coordinate visits to several small facilities in a single day, and may also include homebound individuals, back-to-back, so strike teams are logistically feasible with labor and vaccinator constraints
- Safeway/Albertsons in Northern Nevada has reached out to 25 facilities from the NSIP LTC surveys
- 16 facilities have scheduled and completed clinics with Safeway/Albertsons
- Over 300 shots for Influenza and COVID-19 have been administered since LTC 3.0



# CDC COVID-19 DATA TRACKER



US Weekly Death Rate per 100K = 0.62  
NV Weekly Death Rate per 100K = 0.49

## Vaccinations in Nevada

People Vaccinated	At Least One Dose	Completed Primary Series	Updated (Bivalent) Booster Dose
Total	2,394,845	1,964,053	387,086
% of Total Population	77.8%	63.8%	12.6%
Population ≥ 5 Years of Age	2,387,178	1,960,264	387,009
% of Population ≥ 5 Years of Age	82.5%	67.7%	13.4%
Population ≥ 12 Years of Age	2,312,315	1,901,021	381,017
% of Population ≥ 12 Years of Age	88.2%	72.5%	14.5%
Population ≥ 18 Years of Age	2,154,476	1,775,922	371,072
% of Population ≥ 18 Years of Age	90.2%	74.4%	15.5%
Population ≥ 65 Years of Age	517,628	442,208	177,751
% of Population ≥ 65 Years of Age	95%	89.2%	35.8%

Source: CDC COVID-19 Data Tracker  
Data as of Mar 22, 2023

# NV LTCF RESIDENT COUNTY VACCINATION STATUS

County	% UTD
CARSON CITY	58%
CHURCHILL	48%
CLARK**	42%
DOUGLAS	38%
ELKO	48%
HUMBOLDT	65%
LANDER	65%
LINCOLN	92%
LYON	43%
MINERAL <sup>+</sup>	-
NYE	48%
PERSHING	60%
WASHOE*	45%
WHITE PINE*	-
NEVADA	44%
*Indicates that one (1) or more facilities did not report their census.	
†Indicates that one (1) or	

Source: NHSN Data as of 06/25/2023

# NV LTCFs RESIDENT VACCINATION STATUS



NEVADA DIVISION of PUBLIC and BEHAVIORAL HEALTH

Provider Name	County	% UTD
MARQUIS CARE PLAZA REGENCY	CLARK	68%
HUMBOLDT GENERAL HOSPITAL/HARMONY MANOR SNF	HUMBOLDT	65%
COLLEGE PARK REHABILITATION CENTER	CLARK	65%
HEARTHSTONE OF NORTHERN NEVADA	WASHOE	48%
DELMAR GARDENS OF GREEN VALLEY	CLARK	36%
ADVANCED HEALTH CARE OF LAS VEGAS	CLARK	0%
NORTH LAS VEGAS CARE CENTER	CLARK	45%
PREMIER HEALTH AND REHABILITATION CENTER	CLARK	17%
SILVER RIDGE HEALTHCARE	CLARK	1%
SOUTH LYON MEDICAL CENTER	LYON	43%
MARQUIS CENTENNIAL HILLS	CLARK	48%
HENDERSON HEALTH AND REHABILITATION	CLARK	2%
HIGHLAND MANOR OF MESQUITE	CLARK	57%
NEVADA STATE VETERANS HOME	CLARK	99%
ROYAL SPRINGS HEALTHCARE AND REHAB	CLARK	72%
THE HEIGHTS OF SUMMERLIN	CLARK	47%
TLC CARE CENTER	CLARK	32%
ROSEWOOD REHABILITATION CENTER	WASHOE	3%
EL JEN MEDICAL HOSPITAL INC.	CLARK	60%
HIGHLAND MANOR OF ELKO	ELKO	48%
LIFE CARE CENTER OF RENO	WASHOE	21%
CAREMERIDIAN	CLARK	0%
ADVANCED HEALTH CARE OF SUMMERLIN	CLARK	37%
SILVER HILLS HEALTHCARE CENTER	CLARK	3%
CARSON NURSING AND REHABILITATION CENTER	CARSON CITY	32%
LAS VENTANAS RETIREMENT COMM SNF	CLARK	34%
MOUNTAIN VIEW CARE CENTER	CLARK	-
BOULDER CITY HOSPITAL LTC	CLARK	103%
LIFE CARE CENTER OF SOUTH LAS VEGAS	CLARK	4%

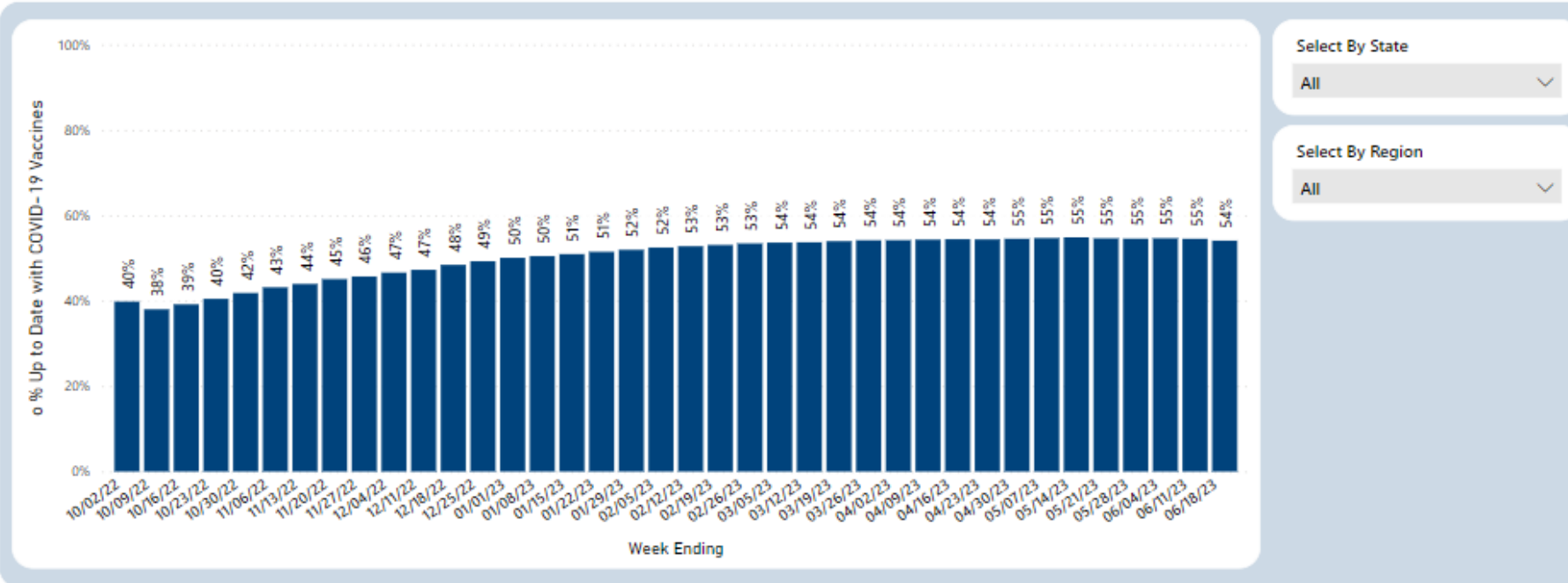
SANDSTONE SPRING VALLEY	CLARK	21%
NORTHERN NEVADA STATE VETERANS HOME	WASHOE	82%
CARSON TAHOE TRANSITIONAL REHABILITATION CENTER	CARSON CITY	35%
GROVER C DILS MEDICAL CENTER SNF	LINCOLN	92%
GARDNERVILLE HEALTH AND REHABILITATION CENTER	DOUGLAS	38%
ORMSBY POST ACUTE REHAB	CARSON CITY	96%
TORREY PINES POST ACUTE AND REHABILITATION	CLARK	-
ALPINE SKILLED NURSING AND REHABILITATION	WASHOE	52%
MOUNTAIN VIEW HEALTH AND REHABILITATION	CARSON CITY	68%
LIFE CARE LAS VEGAS	CLARK	23%
ADVANCED HEALTH CARE OF RENO	WASHOE	-
PERSHING GENERAL HOSPITAL	PERSHING	60%
HORIZON HEALTH AND REHABILITATION	CLARK	22%
SAGE CREEK POST ACUTE	CLARK	27%
ADVANCED HEALTH CARE OF PARADISE	CLARK	5%
CANYON VISTA POST ACUTE	CLARK	51%
TRELLIS CENTENNIAL	CLARK	0%
WINGFIELD SKILLED NURSING AND REHABILITATION CENTER	WASHOE	35%
HORIZON RIDGE NURSING AND REHABILITATION	CLARK	17%
MISSION PINES NURSING AND REHABILITATION CENTER	CLARK	73%
ALTA SKILLED NURSING AND REHABILITATION CENTER	WASHOE	56%
LAS VEGAS POST ACUTE & REHABILITATION	CLARK	-
HARMON HOSPITAL-SNF	CLARK	50%
ADVANCED HEALTH CARE OF HENDERSON	CLARK	50%
CAREMERIDIAN - BUFFALO	CLARK	43%
PAHRUMP HEALTH & REHABILITATION CENTER	NYE	48%
BATTLE MOUNTAIN GENERAL HOSPITAL	LANDER	65%
LEFA L. SERAN	MINERAL	-
ST JOSEPH'S TRANSITIONAL REHAB CENTER	CLARK	48%
WELBROOK CENTENNIAL HILLS	CLARK	30%
NEURORESTORATIVE NEVADA	WASHOE	10%
SPANISH HILLS WELLNESS SUITES	CLARK	34%
HIGHLAND VILLAGE OF FALLON	CHURCHILL	48%
THE WHITE PINE CARE CENTER	WHITE PINE	-
SILVER STATE PEDIATRIC	CLARK	-
TRELLIS PARADISE	CLARK	-

Source: NHSN Data as of 06/25/2023

Indicates two possibilities: facility did not report data (missing data) or data suppressed for QA criteria

# NURSING HOME RESIDENTS UP TO DATE WITH COVID-19 VACCINES – USA @ 54%

**Up to Date:** Receipt of bivalent booster dose or completion of primary series in the last two months



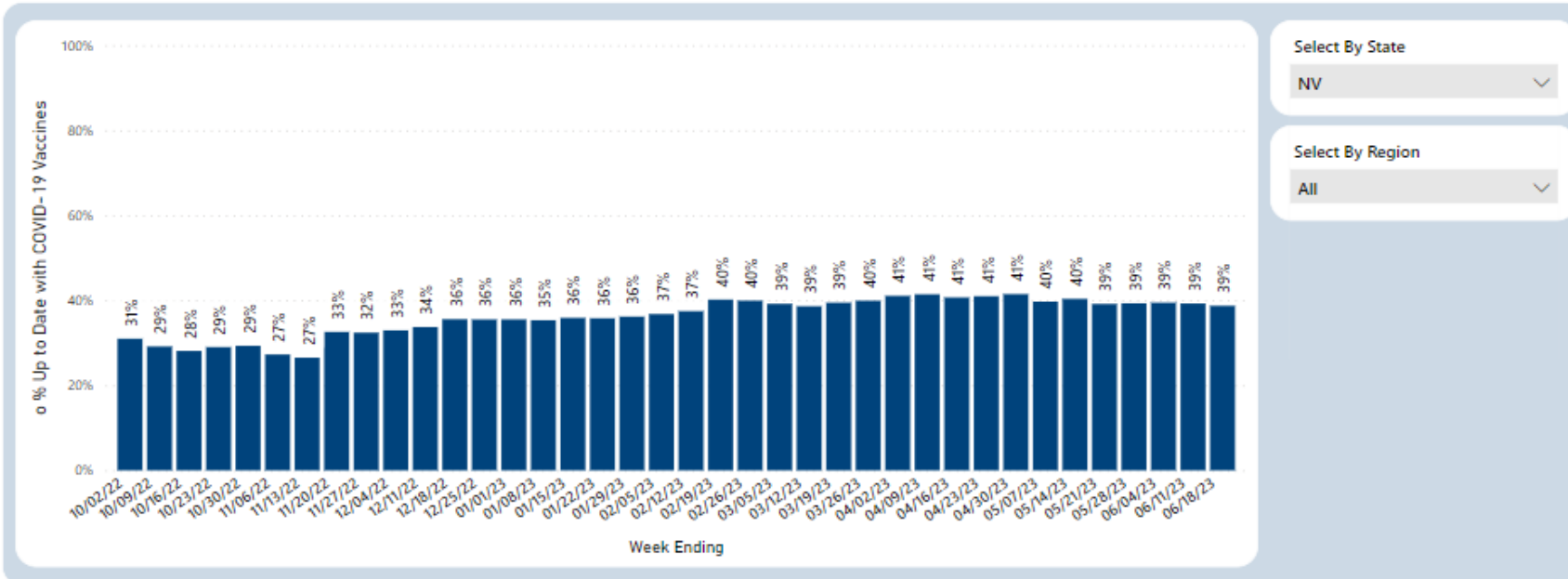
Source: NHSN as of 06/18/2023

1. The NHSN surveillance definition of Up to Date is updated quarterly to incorporate CDC guidance changes. On week-ending 10/2/2022, the up to date definition was updated to include bivalent boosters. Individuals are considered up to date if they received a bivalent booster (or completed their primary series in the last 2 months). See [here](#) for NHSN surveillance definitions, including up to date, by reporting quarter. Data for the most recent week are still accruing.
2. Up to date calculation excludes individuals with medical contraindication from denominator.



# NURSING HOME RESIDENTS UP TO DATE WITH COVID-19 VACCINES – NEVADA @ 39%

**Up to Date:** Receipt of bivalent booster dose or completion of primary series in the last two months



Select By State

NV

Select By Region

All

1. The NHSN surveillance definition of Up to Date is updated quarterly to incorporate CDC guidance changes. On week-ending 10/2/2022, the up to date definition was updated to include bivalent boosters. Individuals are considered up to date if they received a bivalent booster (or completed their primary series in the last 2 months). See [here](#) for NHSN surveillance definitions, including up to date, by reporting quarter. Data for the most recent week are still accruing.
2. Up to date calculation excludes individuals with medical contraindication from denominator.

Data as of 7/17/2023 5:30 AM

Source: NHSN as of 06/18/2023

# NHSN COVID-19 MODULE NEVADA LTCFs 24-30 JULY 2023



NEVADA DIVISION of PUBLIC  
and BEHAVIORAL HEALTH

## Number of skilled nursing facilities (SNF) reporting among all CMS-certified SNF in Nevada\*

State	Number of SNF Reporting	Total CMS-certified SNF	Percent of SNFs Reporting
NV	63	69	91%

## Counties with low reporting rates in Nevada\*

State	Number of counties where <80% of CMS-certified SNF have reported into the NHSN LTC COVID-19 module
NV	0

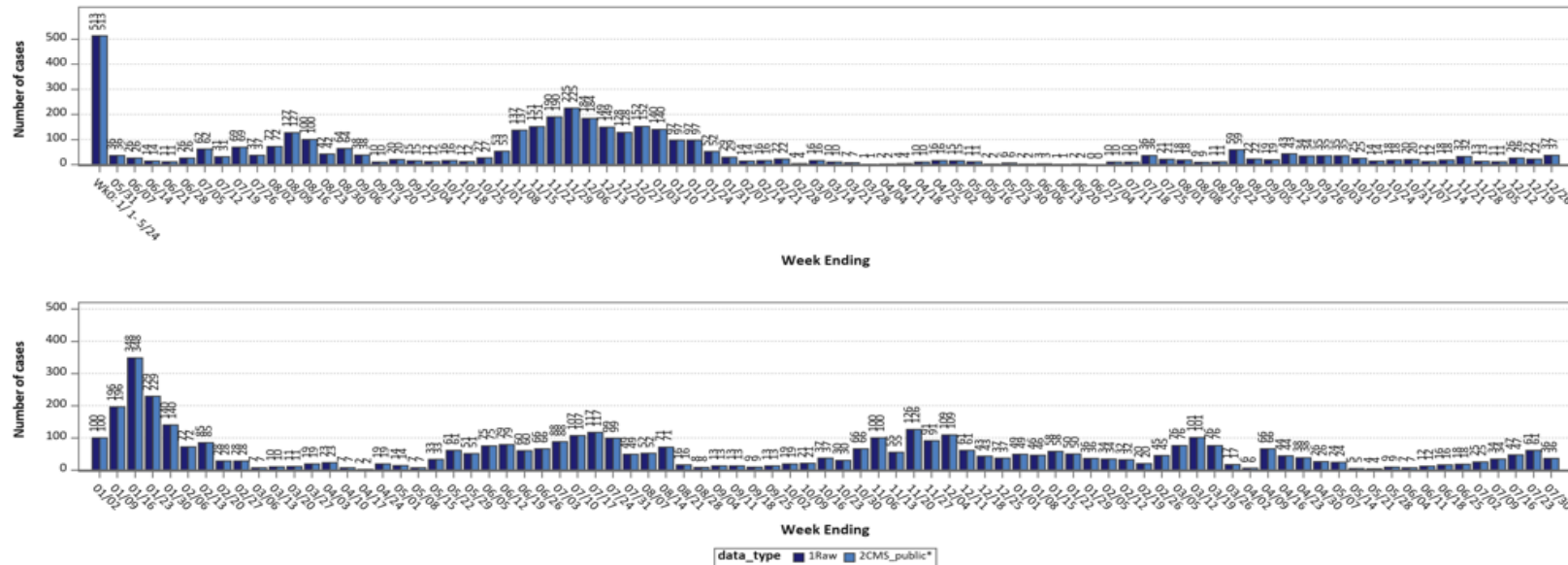
\*Of reporting facility types, only skilled nursing facilities are certified by CMS

\*SNF are considered reporting per identical information of CCN and state in NHSN and CMS datasets

# NEVADA COVID-19 CASES AMONG RESIDENTS IN SNFs

## COVID-19 Cases among Residents in Skilled Nursing Facilities in Nevada

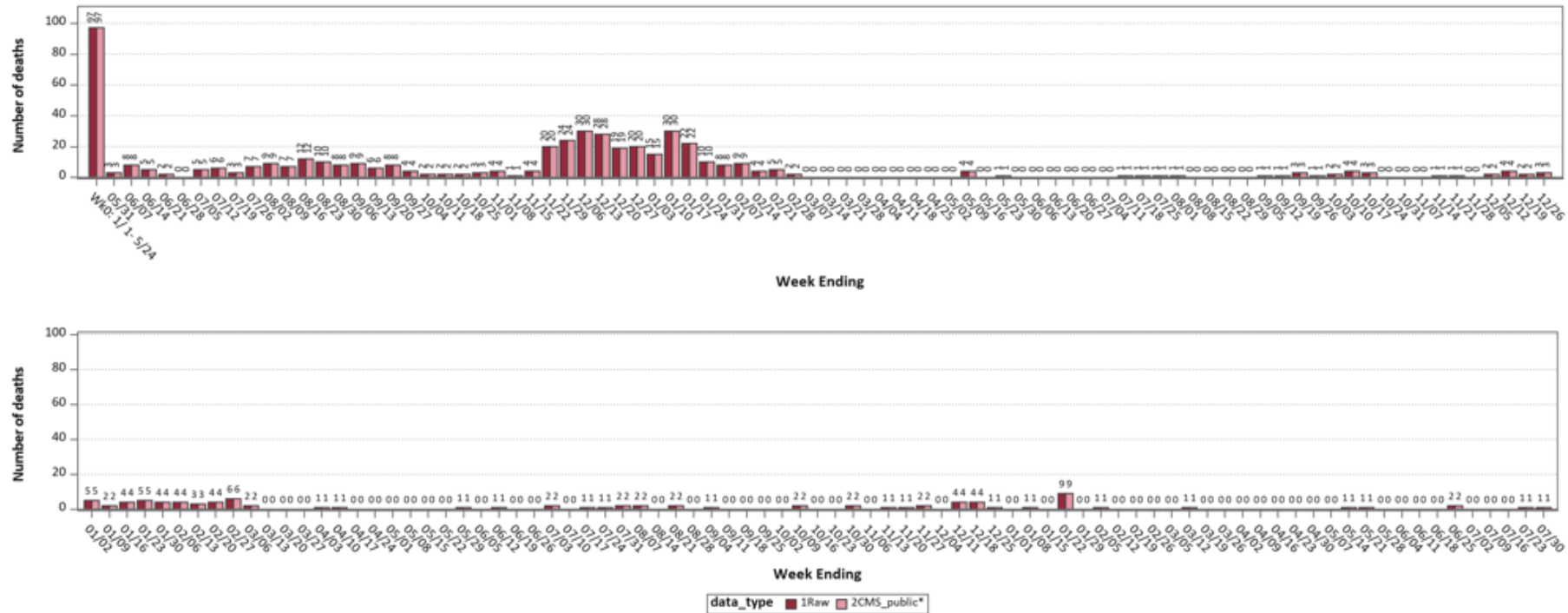
Confirmed Cases among Residents



\*For CMS public data, data that appear to be non-compliant with the data collection protocol are set to null to highlight numbers that need to be confirmed or corrected (data in the format for CMS public reporting)

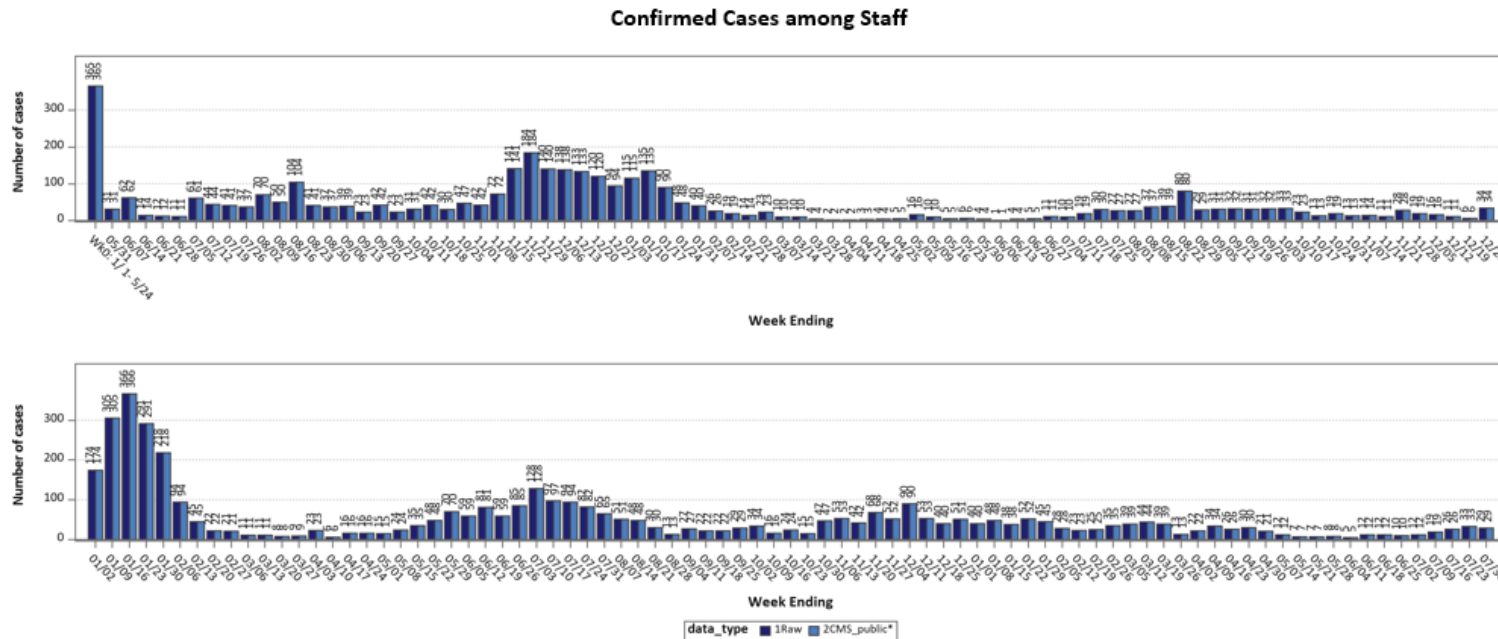
# NEVADA COVID-19 DEATHS AMONG RESIDENTS IN SNFs

COVID-19 Deaths among Residents



# NEVADA COVID-19 CASES AMONG STAFF IN SNFs

## COVID-19 Cases among Staff in Skilled Nursing Facilities in Nevada



\*For CMS public data, data that appear to be non-compliant with the data collection protocol are set to null to highlight numbers that need to be confirmed or corrected (data in the format for CMS public reporting)



# FUTURE TEAM OUTREACH EFFORTS



- Continue with LTC 3.0 Outreach
  - Contact and survey remaining SNF facilities
  - targeted NSIP outreach to SNF requests
  - Visit SNFs and offer trainings and updates
    - NV WebIZ training
    - Vaccine trainings
    - Strike teams
    - Provider Enrollment, etc.
  - Continue NDOC partnership (recurring visits and possibly new NDOC facilities)
  - Continue Ombudsman partnership
  - Continued messaging: [NVCare@health.nv.gov](mailto:NVCare@health.nv.gov)
- Request a team effort to create/attend regular virtual meetings with representatives from all SNFs, so NSIP can create partnerships, deliver factual updates, and offer assistance

# MAPPING PROJECT FOR NEVADA'S 466 PHARMACIES

Pharmacies by City:

	A	B
1	City	Number Of Pharmacies
2	BATTLE MOUNTAIN	1
3	BOULDER CITY	2
4	CALIENTE	2
5	CARSON CITY	13
6	DAYTON	1
7	ELKO	4
8	ELY	4
9	EUREKA	1
10	FALLON	5
11	FERNLEY	3
12	GARDNERVILLE	2
13	HAWTHORNE	1
14	HENDERSON	46
15	INCLINE VILLAGE	2
16	LAS VEGAS	264
17	LOVELOCK	1
18	MESQUITE	2
19	NORTH LAS VEGAS	32
20	OVERTON	1
21	PAHRUMP	5
22	RENO	46
23	SILVER SPRINGS	1
24	SPARKS	15
25	SPRING CREEK	1
26	SUN VALLEY	2
27	TONOPAH	1
28	WEST WENDOVER	1
29	WINNEMUCCA	4
30	YERINGTON	2
31	ZEPHYR COVE	1



# QUESTIONS FOR COMMISSION ON AGING SUBCOMMITTEE



1. What else can be done to encourage facilities to administer vaccines on their own, to residents and patients?
2. As commercialization approaches, flexibility of vaccine availability will be lost for the LTC population, since charging insurances will become a factor. Any solutions?
3. To reach homebound populations, what can be done to secure mobile vaccination units, and will they be allowed to vaccinate in private homes?
4. If mask requirements in facilities are dropped, are there other options to recommend and encourage mask usage being explored?
5. There will be a new emphasis on the trifecta of respiratory illnesses, including COVID-19, Influenza, and RSV, versus the normal “flu season”? What else can be done to encourage co-administration of COVID-19 vaccines with other recommended vaccines?
6. What are the anticipated effects of new FDA COVID-19 vaccine schedules that move away from up-to-date toward an annual or bi-annual COVID-19 vaccine?
7. Are there any other changes NSIP should be keeping on their radar?

# ACRONYMS

---

- ADSD: Aging and Disability Services Division
- ALF: Assisted Living Facility
- CMS: Centers for Medicare and Medicaid Services
- COA: Commission on Aging
- HCP: Health Care Provider
- HCQC: Health Care Quality and Compliance
- LHA: Local Health Authority
- LTC: Long Term Care
- LTCF: Long Term Care Facility
- NDOC: NV Department of Corrections
- NHSN: National Healthcare Safety Network
- NSIP: NV State Immunization Program
- NV: Nevada
- OPHIE: Office of Public Health Investigations and Epidemiology
- PHE: Public Health Emergency
- PPP: Pharmacy Partnership Program
- SNF: Skilled Nursing Facility
- SNHD: Southern Nevada Health District
- WCHD: Washoe County Health District



A photograph of a family walking in a park. A man and a woman are walking towards the right, with a young girl in the foreground wearing a white helmet and riding a tricycle. The background shows trees and a house. The entire image is overlaid with a blue tint.

# QUESTIONS?

---



**NEVADA DIVISION of PUBLIC  
and BEHAVIORAL HEALTH**





---

# CONTACT INFORMATION

Katherine Strain, MS  
LTCF Outreach Coordinator/CC3 Project Manager  
(775) 720-6852  
[kstrain@health.nv.gov](mailto:kstrain@health.nv.gov)

Kristy Zigenis, MA  
Immunization Program Manager  
775-684-2228  
[kzigenis@health.nv.gov](mailto:kzigenis@health.nv.gov)

Julieta Gallardo, MPH  
Influenza/COVID-19 Adult Immunization  
Coordinator  
970-714-0632  
[jgallardo@health.nv.gov](mailto:jgallardo@health.nv.gov)

Katharine Franco  
COVID-19 Special Projects Coordinator  
505-316-8036  
[kfranco@health.nv.gov](mailto:kfranco@health.nv.gov)

For questions or to request information on NSIP's Long Term Care 3.0  
All Vaccine Access Program, please email [NVCare @health.nv.gov](mailto:NVCare@health.nv.gov)





**NEVADA DIVISION of PUBLIC  
and BEHAVIORAL HEALTH**